



The must have App for property search
ANZ Property Tracker

Find out more

ANZ
We live in your world



SHARE



Home

Well Read

Epicurean

Fashionistas

Culture

Soul Food

Adrenalin Rush

House & Garden

Developing Our City

Shoppers' Guide

Competitions

Christmas Stories

Flushed

3.06PM 4-8-2010

Dhav Naidu

Watching an episode of *Dynasty* recently brought back the horrors of wearing blush in the 1980s. Racing stripes on your cheeks are not a good look! Much as I like the character Alexis Carrington, living by her dress code is not something I recommend.

Blushers do not get the respect they deserve for sculpting the face and adding dimension to it.

Applying blusher is easy to master:

There are three types of blush formulations, and they're self-explanatory – powder, cream and liquid. When applying blush, always keep in mind less is certainly more.

To apply powder blush, always use a large brush. Gently place the brush on the powder to ensure you don't overload it with blusher. Apply the colour on your cheekbones in upward sweeping strokes – blend well and take the colour all the way to your hairline.

To apply cream blush, make sure you have not set your foundation with powder, as cream and powder do not mix. Rest your ring finger on the cream blush. It has the least control of all your fingers, so this way you cannot take more colour than you need. Place the finger on your cheekbone and sweep the colour all the way to the hairline.

To apply liquid blush, do not set your foundation with powder. Taking the tiniest dollop of colour, place three fingers close to the bridge of your nose. Where your third finger furthest away from your nose rests is the place you start adding colour, blending it towards your hairline.

20s

Liquids are more fun. Try Ere Perez Natural Beetroot Cheek and Lip Tint (\$29.95). This Australian company is producing some of the most amazing organic make-up.

30s

Smashbox Cosmetics O-Glow (\$37.95) is perfect. It is suitable for any skin tone and type ... yes, even great for dark skin. A clear liquid that miraculously changes to suit your colouring when applied ... you've got to love that.

40s

Powder with a hint of shimmer or cream blush will do the trick. Nars Orgasm (peachy pink) powder blush (\$62) or Multiple (\$89) are simply divine.

50s

A soft powder is always best to give skin just a hint of colour. Bobbi Brown (\$58) is the consummate choice. For pale skin tone: Blushed; medium: Rose; dark: Spice/Deep Red.

60s & beyond

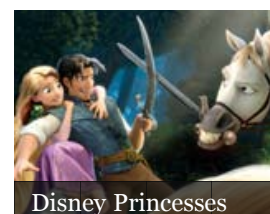
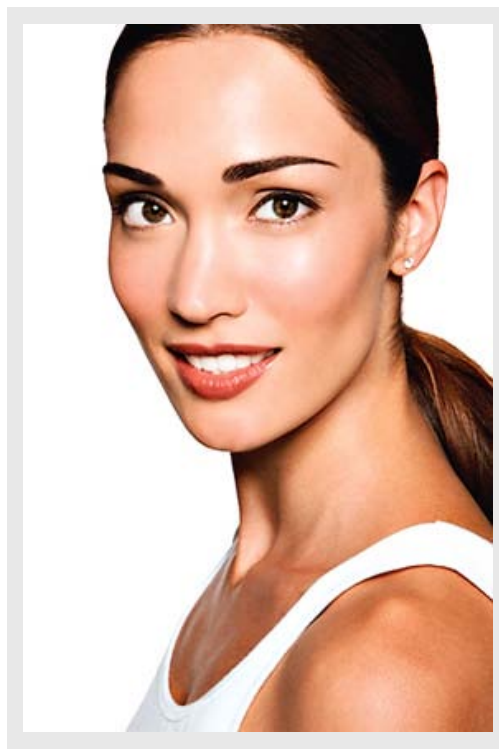
Elizabeth Arden Ceramide Cream Blush (\$60), a soft sculpting blush that nourishes the skin while adding a hint of colour. Comes in four shades.

THE FIND

Lapureté

www.lapurete.com.au

Arguably the world's first range of anti-wrinkle products containing a natural Botox alternative – okuru. This is



NEWSLETTER

Free every week in your inbox

a plant native to West Africa, and its seeds contain a combination of peptides that work in a similar way to Botox. Independent studies conducted by Monash University found that there was at least a 27 per cent reduction in expression lines after four weeks of use. Lapuret  carries a full range to target the common concerns of the skin.

EDITOR'S PICK

You cannot go past Lapuret 's great skincare range, formulated in Melbourne with world-class technology and ingredients. Independently tested with proven results. Sometimes you just need more than a price tag and marketing to win over consumers, and Lapuret  has done just that.

THE SCOOP

CoverGirl and Olay

Simply Ageless Serum Primer (\$24.95)

A superb primer to perk up and soothe the skin without the price tag. CoverGirl has teamed with Olay Regenerist to come up with a serum primer that is not only great for your skin but provides a great canvas for your make-up.

askdhav@gmail.com

Comments

Submit a comment

Name

Email

Comment

+ MELBOURNE'S BEST PROPERTY
STONNINGTON & BOROONDARA

+ GREEN BELT PROPERTIES
HEIDELBERG & DIAMOND VALLEY